

W. LANE'S
Cash Drapers, Millinery, Clothing, and General Outfitters, Belmore Square, Goulburn.



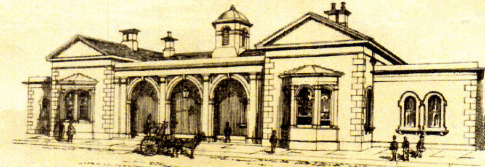
FINLAY & CO.
Auctioneers, Land, Stock, and General Agents, Belmore Square.



A. M. HUNT & CO.
Import Grocers, Provision Merchants, Tea Dealers, Jam, Soap, and Baking Powder Manufacturers.



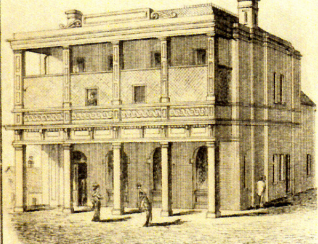
C. ROGERS.
The Great Furnishing Arcade, Ashurst Street, Goulburn.



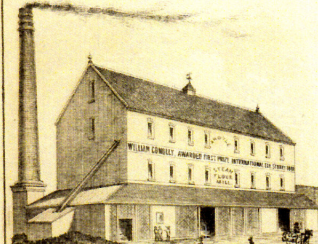
RAILWAY STATION.



WOOD & COMPANY.
Best Manufacturers, Tailors and Curriers, Ashurst Street, Goulburn and Park Street, Sydney.



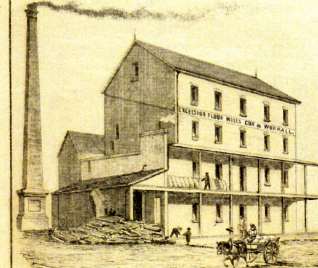
COMMERCIAL BANK.



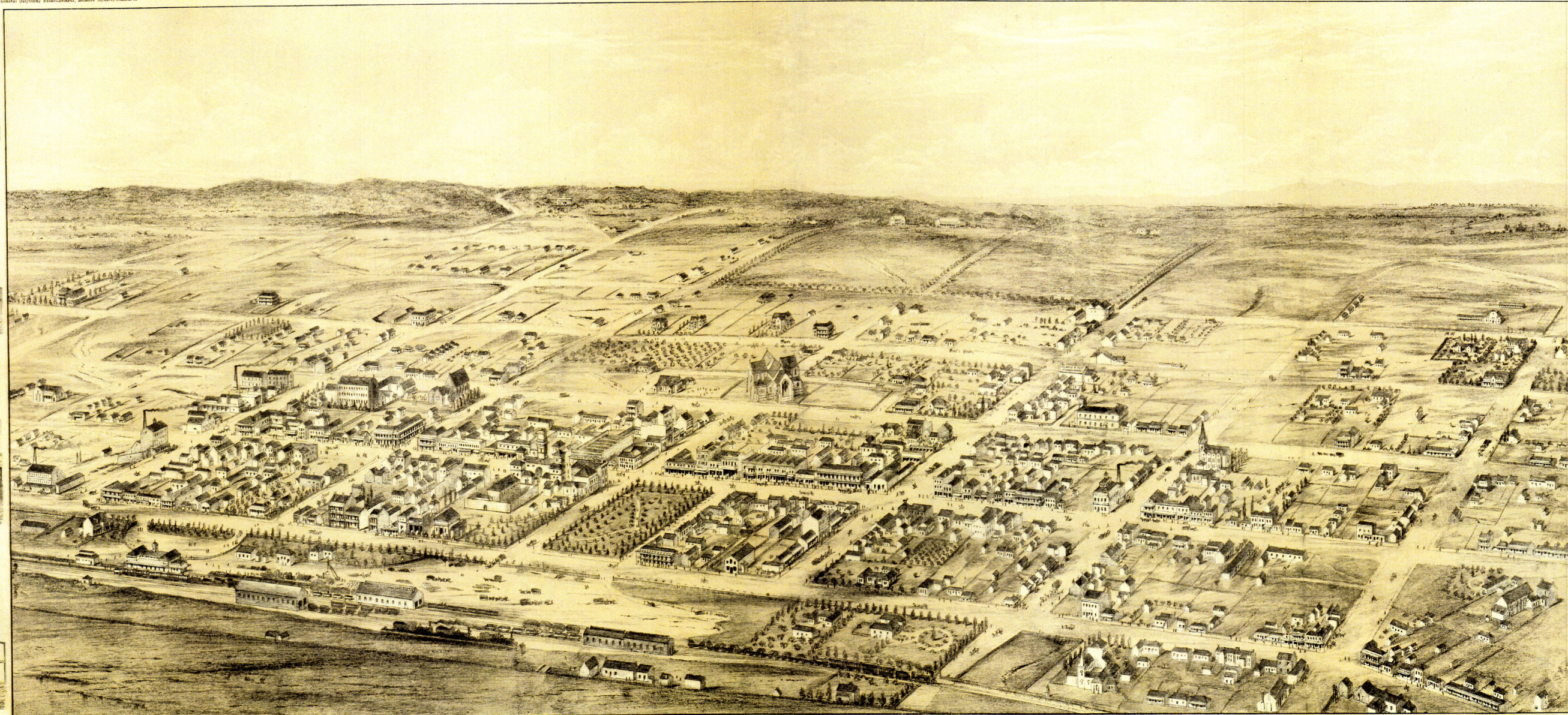
WILLIAM CONOLLY.
Anglo Steam Flour Mills, Highgate Creek, Goulburn.



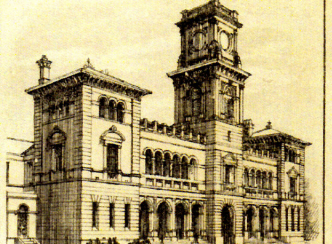
CLARKE & TAIT.
Drapers, Cloth and Capes, &c. The Largest Store in the City.



COX & WORRALL.
Established Steam Flour Mills, Clarke Street, Goulburn. Assorted Great Price for Flour, suitable for all purposes. Stock kept on hand in any quantity, and delivery made at any railway station.



AUSTRALIAN JOINT STOCK BANK.



POST AND TELEGRAPH OFFICES.



"ARGUS" OFFICE.
Market Street, Belmore Square.



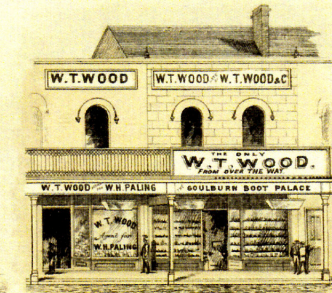
W. KINGSSELL (KINGSSELL'S BUILDINGS),
Timber, Wharves and Retail, Timber and Distilleries from Market, Ashurst Street.



OWEN FURNER & SONS,
Wholesale and Retail Grocers, Drapers, Importers, Provisions and Timber Merchants, Parkville Workmen.



BUTLER BROS.,
Merchant Tailors, Hatters, Booters, &c. Ashurst Street.



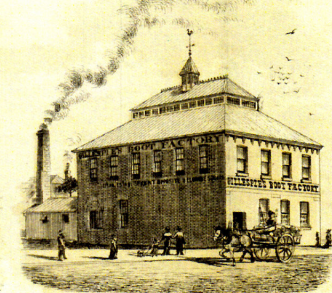
W. T. WOOD,
The Goulburn Boot Palace, Flour and Sugar Warehouse, Ashurst Street.



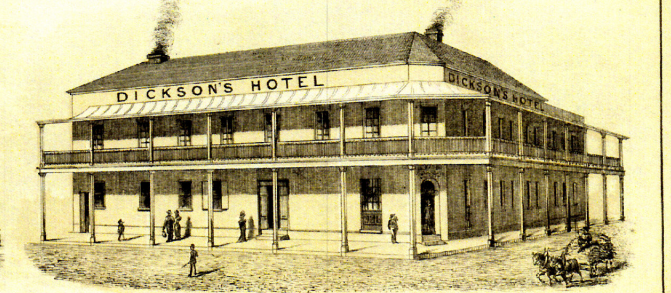
WILLIAM DAVIES & CO.,
Importers of British, Foreign, and American Merchandise, Drapers, Grocers, Ironmongers, &c. Opposite New Post Office Buildings, Goulburn.



W. S. FOXALL,
Bookseller, Stationer, and Music Store, Ashurst Street, Goulburn.



GILLESPIE'S BOOT FACTORY.
Established Establishment, Ashurst Street, opposite Belmore Square.



COMMERCIAL HOTEL, BELMORE SQUARE.
James Dickson, Proprietor.

CITY OF GOULBURN, N. S. WALES.